

# Belt Pulley Service Kit

Model: T1, Speed Scrub 15



This kit includes the necessary parts to reduce potential brush motor failure due to excessive amp draw. This kit is intended for models manufactured before January 2011.

**NOTE:** For models manufactured between serial numbers 10000000-10440700 and 60000000-60007385, this kit also includes the necessary hardware to prevent the belt pulley screw from backing out due to vibration (torque bond breaking loose) resulting in pulley assembly damage. Install new hardware if applicable (See Figure A on page 2). For the E5/Speed Ex models order service kit 9006841. For the R3/Strive Compact models order service kit 9006842.

## INSTALLATION INSTRUCTIONS:

**Installation Time: 1 hour**

**SPECIAL TOOLS REQUIRED:** None

**FOR SAFETY:** Before installing kit, unplug power cord from wall outlet.

1. Install kit parts as described in following pages.
2. After the kit parts are installed, adjust the scrub head height as described in the following steps.

### ADJUST SCRUB HEAD HEIGHT:

1. Remove the brush idler plate, brush and squeegee blades from scrub head (Figure 1).



Fig. 1

2. Raise the scrub head to transport position by stepping down on lift pedal. Loosen the jam nut on the height adjustment knob. (Figure 2)



Fig. 2

3. Lower the scrub head to floor.
4. Using the supplied spacer as a gauge to achieve proper scrub head height, place the spacer under the back corner of the scrub head as shown (Figure 3).

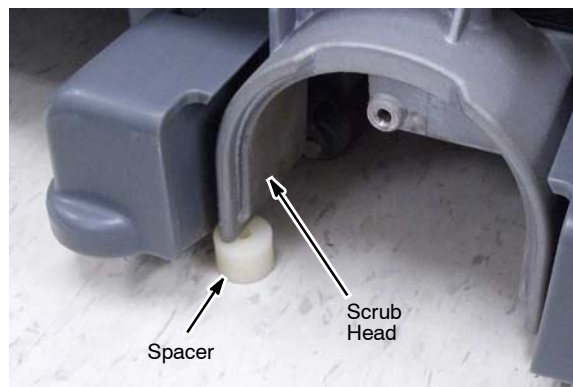


Fig. 3

5. Adjust the brush height knob until the scrub head presses slightly down on the spacer to where the spacer can be slid in and out with little resistance (Figure 4). Re-tighten jam nut (Figure 2).

**NOTE:** Once the scrub head height is properly adjusted, the adjustment knob should now be permanently set and will require no further adjustment.

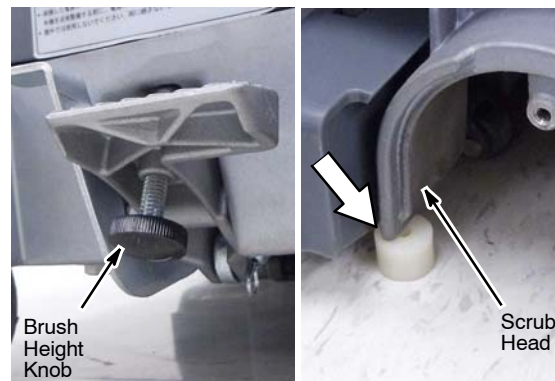
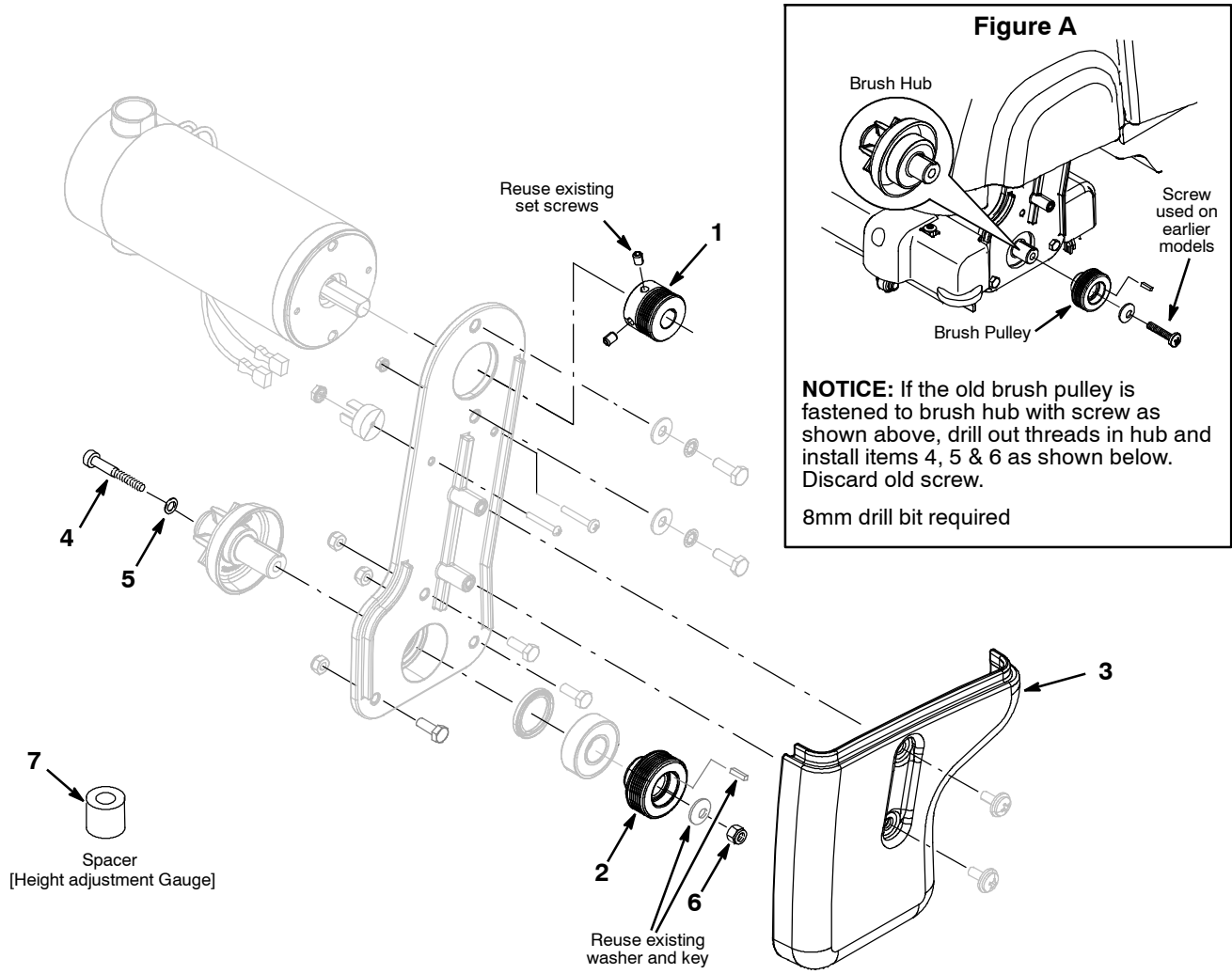


Fig. 4

6. Reinstall brush and squeegee blades.

### BRUSH PULLEY & BELT COVER KIT

Kit No. 9008249-Tennant T1, Kit No. 9008298-Nobles Speed Scrub 15



Item	Part No.	Description	Qty.
1	1063530	Sheave, 07grv, 25.8pd [Ph]	1
2	1030625	Sheave, 07grv, 49.3pd [Ph]	1
3	1064396	Cover, Belt, Teal [Tennant T1 Kit 9008249]	1
3	1064397	Cover, Belt, Green [Nobles Speed Scrub 15 Kit 9008298]	1
4	1057476	Screw, Soc, M8 X 1.25 X 55, SS	1
5	1057482	Washer, Flat, 0.328B 0.571D 0.063, SS	1
6	08713	Nut, Hex, Lock, M8 X 1.25, NL, SS	1
7	578579	Spacer [Height adjustment Gauge] - Refer to instructions on page 1	1